

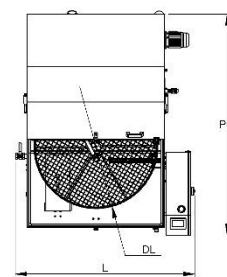
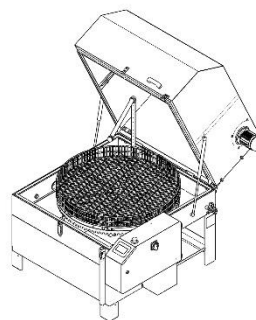
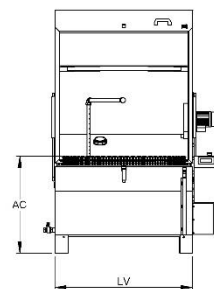
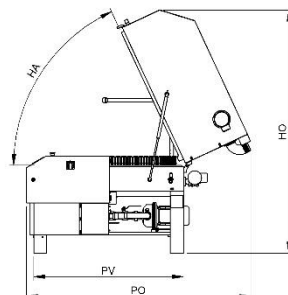
## SIMPLEX MEDIUM

Simplex performs the successful automatic washing of medium and large size mechanical parts.

Washing is carried out by the action of upper, lower and side nozzles. The slow rotation of the platform is ensured by a gear motor with a torque limiter.

A PLC management enables numberless customisations thanks to a wide range of accessories.

The machine is available in LT (without insulation, maximum and adjustable temperature up to 60°C) and HT (insulated, maximum and adjustable temperature up to 80°C) versions.



Dimensions and layout	S100	S120
depth with opened machine (PO)	175 cm	210 cm
height with opened machine (HO)	191 cm	211 cm
loading height (AC)	67 cm	67 cm
noise HT (RU_HT)	70 dBa	70 dBa
noise LT (RU)	75 dBa	75 dBa
opening angle (HA)	60 °	60 °
opening angle (with pneumatic opening) (HA_APC)	80°	80°
tank depth (PV)	120 cm	135 cm
tank width (LV)	110 cm	130 cm
washing height (HL)	54 cm	70 cm
weight (W)	155 Kg	225 Kg
width (L)	146 cm	166 cm
working diameter (DL)	97 cm	117 cm

Connections	S100	S120
Cabin vent outlet	Ø75 mm	Ø75 mm
Compressed air blower solenoid valve	F 1"	F 1"
Compressed air intake	F 1/4"	F 1/4"
Deoiling oil drain	M 1/2"	M 1/2"
Electrical connection: plug	3P+N+PE 32A	3P+N+PE 32A
Emptying pump	F 1"	F 1"
Steam extraction	Ø80 mm	Ø80 mm
Tank liquid drain	F 1"	F 1"
Water filling solenoid valve	F 1/2"	F 1/2"

Technical data	S100	S120
Compressed air blowing	130 Nmc/h @ 4 bar	150 Nmc/h @ 4 bar

Technical data	S100	S120
Disk oil separator	0,09 kW	0,09 kW
Drying	4,5 kW	4,5 kW
Heating tank 1	6 kW	8 kW
High pressure pump 1	3 kW - 6/7 bar - 200/150 lt/min	3 kW - 6/7 bar - 200/150 lt/min
Load capacity	200 kg	300 kg
Motor for parts rotation	0,09 kW	0,09 kW
Pump 1	1,5 kW - 2/3 bar - 250/200 lt/min	1,5 kW - 2/3 bar - 250/200 lt/min
Steam exhauster	0,25 kw 320 Nmc/h	0,25 kw 320 Nmc/h
Tank 1 capacity	210 lt	270 lt
Tank emptying pump	0,37 kW	0,37 kW

Technical features	S100	S120
Aisi 304 stainless steel filter in pump intake	★	★
AISI 304L stainless steel washing pipelines with professional stainless steel flat nozzles	★	★
Automatic calculation of electricity consumption in real time	★	★
Color 4" touchscreen display for settings and programs	★	★
Cover border gasket	★	★
Door closure assisted with gas springs and fastening hook	★	★
Drain valves for emptying tanks	★	★
Heating of the liquid with stainless steel electric heating element	★	★
HT Version	★	★
Internal ed external welding bleaching	★	★
IP55 main electrical box, management with touchscreen PLC (DGT V4)	★	★
Manual water filling valve	★	★
Mechanical rotation of basket via gearmotor	★	★
Minimum level switch	★	★
Reinforced basket in electrically welded mesh with external border in galvanized steel	★	★
Safety limit switch on cover opening	★	★
Siemens electric power parts	★	★
Stainless steel electric pump with special seals	★	★
Structure and sheet metal in contact with liquid in AISI 304L stainless steel	★	★
Timed electric exhaustion of steam	★	★
Weekly programming to start heating and deoiler (if installed)	★	★

Accessories	S100	S120	Cod.
Additional basket/platform in stainless steel	✓	✓	CEX
Automatic chemical product dispenser, installed in bath 1	✓	✓	DAD#1
Bag filter in stainless steel, installed in the bath 1	✓	✓	FS#1
Basket in stainless steel AISI 304L instead of the galvanized one	✓	✓	CAX
Centrifugal steam condenser S on wheels [C]	✓	✓	CCEC_S
Compact pneumatic oil separator	✓	✓	MD
Compressed air blowing [B]	✓	✓	SAC
Customization for use of detergents with bacteria	✓	✓	BIO
Detergent suction tank for automatic dispenser	✓	✓	SDAD
Device for remote connection and remote support for PLC Siemens	✓	✓	TELSIE
Device remote connection and remote support for HMI Weintek	✓	✓	TELWEI
Disc oil separator with dedicated motorization	✓	✓	DB1
Electrical board installed on the opposite side of the standard one	✓	✓	QSX
Emptying pump	✓	✓	SV
High pressure washing pump	✓	✓	PP1
HMI Siemens KTP - Display (only for Siemens PLC)	✓	✓	HMIS
Hot air drying with resistor and air blade side channel blower [B]	✓	✓	ARS
Industry 5.0 Ready (Energy Meter)	✓	✓	IND5
Kit for Industry 4.0 for HMI Weintek	✓	✓	IND4WEI
Kit for Industry 4.0 for PLC Siemens	✓	✓	IND4SIE
Kit for use with abrasive contaminants in the washing liquid	✓	✓	PCA
Led light tower with 3 lights and sound alarm	✓	✓	TL3
Load capacity increased by 100 kg with calendered slewing ring and stainless steel support bearings	✓	✓	PM100
Machine equipped with wheels for handling [D]	✓	✓	RUO
Magnetic spark plug for bag filter size 2 for ferrite powder	✓	✓	MAGFS2

<b>Accessories</b>	<b>S100</b>	<b>S120</b>	<b>Cod.</b>
Manual washing (<= 60°C) [H]	✓	✓	MAN
Manual washing 80 bar (<= 60°C) [H]	✓	✓	MAN80LT
Manual washing 80 bar (<= 60°C) INOX pump for PFC [H]	✓	✓	MAN80PFC
Maximum liquid level control in tank 1 and filling solenoid valve	✓	✓	RIEMP#1
Mixed resin demineralizer M20 with conductivity meter	✓	✓	ADDP
Panels under the basket with cap filter for collecting chips [A]	✓	✓	PSC
PLC Siemens S7 1200 - HMI touchscreen Weintek	✓	✓	PLS
Pneumatic opening and closing of the lid with two-manual control	✓	✓	APC
Pressure regulating valve, with pressure gauge	✓	✓	VRPM
Second ramp of washing nozzles [L]	✓	✓	STR
Stainless steel AISI 304L additional external trolley	✓	✓	CAA
Stainless steel AISI 304L external trolley with drops-catcher, wheels and safety brakes [G]	✓	✓	CES
Stainless steel AISI 304L retention tank with drip-catcher [D]	✓	✓	RIT
Stainless steel fittings and valves kit ( for parts that are in contact with liquids)	✓	✓	PFC
Two-hands control for basket rotation with opened lid	✓	✓	CDMROT
Upper ramp fastened to the cover [E]	✓	✓	RSCO

#### Accessories notes legend

[A]: It is included in the HT version

[B]: it is mandatory to add the panels under the basket (if present in the price list for this model)

[C]: it is mandatory to add the vapor extraction (if it is not already included in the chosen model)

[D]: the two accessories are incompatible, they cannot be installed on the same system

[E]: the useful washing height is reduced by 20 mm

[G]: the useful washing height is reduced by 130 mm

[H]: the loading height could be different to get an ergonomic height of the gloves for the manual use

[L]: the high pressure pump is required

★ = included in the basic model, ✓ = available on request, ✗ = not available